

Ultimate - Multi-Touch Performance



KIP 7170



SMART MULTI-TOUCH CONTROLS

- Colour Multi-Touch Controls
- Cloud Connected
- Super View Image Control
 - Copy, scan and print previews
 - Instantly view b&w and colour images
 - Multi-touch controls allow you to zoom, rotate & pan the image preview



The productivity of the KIP 7170 system is designed to satisfy the most demanding needs of decentralized users and may also be expanded as a centralized network printer.

- CIS Scanning - with Realtime Thresholding Technology
- Energy Star Qualified - Economical & Ecological
- Total Control of the Copy, Print & Scan Process
- Workgroup Walk-Up Simplicity



Multi-Function System

- Single Footprint, Space Saving Design
- Colour Multi-Touch Controls
- Innovative Top Stacking System
- 2 Media Roll Capacity
- 6 'A1' Size Prints Per Minute
- Premier Performance & Quality
- Smart Eco² Design



Production System with Stacking

- Direct prints to stack on top or rear
- Create colour copies directly to inkjet printers
- Scan to a wide range of file formats
- Real time copy and scan previews
- USB printing and scanning support
- On screen copy, print & scan previews



Production System with Folding

- Precision document folding
- Operates at full print engine speed
- Ultra-quiet operation
- Online and offline folding
- Fully integrated with KIP software
- Compact footprint

SMART SOLUTIONS



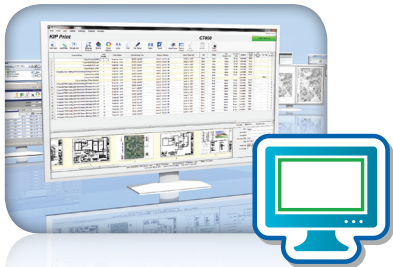
Smart Multi-Touch Controls

- One Touch Access to System Features in 25 languages
- Instantaneously responsive 307mm colour touchscreen
- Intuitive feature selection for easy operation



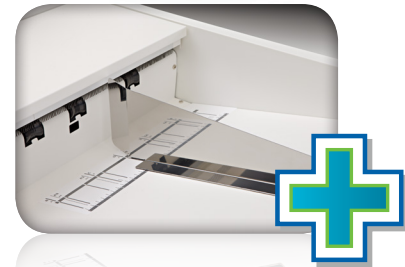
Space Saving Design

- Easy Operator Access
- Next to Wall Installation
- Innovative Top Stacking System



Comprehensive Software Apps

- Print Management Suite Synergy
- Functional continuity across all KIP applications
- All Available for Free Download from www.KIP.com



Integrated Production Systems

- Fully Integrated Folding & Stacking
- Easy Print Set Handling & Distribution
- Two Way Communications for Intelligent Operation



KIP Cloud Connect

- Use the Cloud Service of your Choice
- Print From and Scan to the Cloud
- Print Files via Email Attachments
- Integrated with Skydrive, Google Drive or Dropbox, Box.com, Microsoft Sharepoint & Microsoft Office 365 Online™



Eco Friendly System

- 97% Product Recyclability
- 100% Toner Efficient - No Waste Toner
- Promotes Environmental Health & Sustainability



www.KIP.com